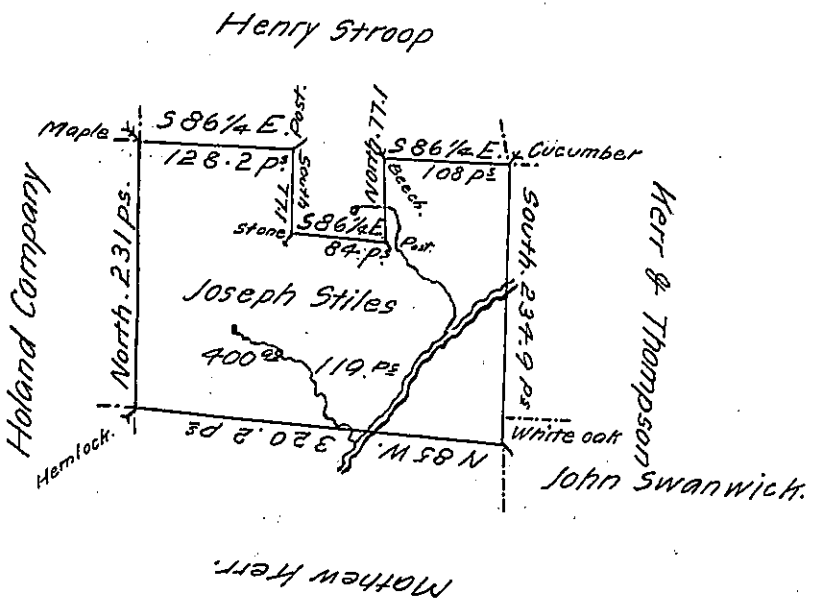


Courses and distances of the whole tract of land Beginning at a Chesnut thence.

	Perches
S 86 1/4 E. by H Stroop.	128.2 to Post
South	77.1 Stone
S 86 1/4 E.	84.0 Post
North	77.1 Beech
S 86 1/4 E.	108.0 Cucumber
South by Herr & Thomp.	237.9 W.O.
N 85 W. by Mat Herr	320.2 Maple
North by H. Company	231.0 to Beginning.



In Pursuance of a Warrant of 400 acres, Granted to Joseph Stiles dated the 14th of April 1792 was surveyed for the use of John Gilson the above described tract of Land Containing 400 Acres 119 Perches and allowance of six pr Cent for Roads &c on the 29th day of december A.D. 1829 and the said Gilson was Residing thereon and there appered upwards of 30 acres cleared fenced & in a good state of Cultivation situate in Oil Creek Township Crawford County Pa.

James Herrington Dp. St.

To Gabl Hiester Esquire

Surveyor General Land Office Pa.

IN TESTIMONY that the above is a copy of the original remaining on file in the Department of Internal Affairs of Pennsylvania, made comformably to an Act of Assembly approved the 16th day of February 1833, I have hereunto set my hand and caused the Seal of said Department to be affixed at Harrisburg, this Twenty Sixth day of December 1906

*Lauchlin Curran*  
Secretary of Internal Affairs.